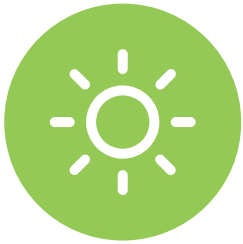


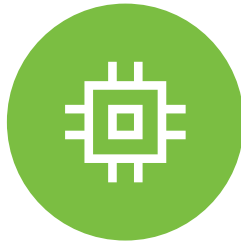
Metter HS2200



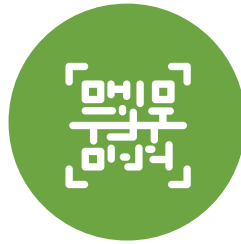
- ✔ Versatile connection: 2.4G+BT + connectivity to PCs and mobile devices
- ✔ Efficient scanning: capable of reading complex and high-density barcodes
- ✔ Quick updates: can be done online, in a matter of seconds



RED LED



ARM



1D/ 2D



Mobile payment



640x480 px

Features:

- » Fast scanning of 1D/2D barcodes, manual and automatic
- » 2600mAh battery, supports continuous scanning for up to 27 hours
- » Compatible with Windows, Android, Linux systems
- » 2.4G wireless + Bluetooth communication system
- » Ideal for industries such as manufacturing, pharmaceuticals, and retail



Retail



Hospitality



Healthcare



Production



Metter HS2200

Parameters:

Performance Parameters	
Light Level	White LED (visual), Red LED (targeting)
CPU	32bit ARM
Scanning Mode	Trigger and batch mode
Image Sensor	CMOS
CMOS Resolution	640x480 Pixels
Scanning Speed	100 reads/second
Compatible System	Windows, Android, Linux / IOS
Minimum Resolution	≥4mil
Scanning Angle	360° rotation; 65° tilt; 60° height;
Decoding Depth	40 – 390mm (13mil EAN), 40 – 300mm (10mil Data Matrix)
Decoding Capabilities	<ul style="list-style-type: none"> 1D: Codabar, Code 11, Code39, Code32, Interleaved 2 of 5, Industrial 2 of 5, Matrix 2 of 5, Code93, Code128, GS1-128, UPC-A, UPC-E, EAN 8, EAN 13, GS1 DataBar (RSS14), GS1 DataBar Limited, GS1 DataBar Expanded, etc. 2D: PDF417, Micro PDF417, QR Code, Micro QR, Data Matrix, Aztec Code
Product Parameters	
Dimensions	L*W*H: 147.7*90*62.8(mm)
Weight	188.4 g (scanner) 318.3g (charging base)
Materials	ABS+PC
Power Supply	DC 5V
Working Current	250mA
Standby Current	<90mA
Indicators	LED Indicator and Buzzer
Interface	USB / USB-VCP
Charging Method	Charging base, Type C interface
Charging Duration	4.5 hours
Standby Duration	6 months
Battery Operating Duration	27 hours
Battery	Rechargeable, replaceable, lithium, 2600mAh
Receiver Interface	USB
Other Parameters	
Connectivity	2.4G wireless, Bluetooth
Connectivity Range	Open space: 100m – in 2.4G mode, Open space: 100m – in Bluetooth mode
Humidity	5%~95% (non-condensing)
Temperature	• Operating Temperature: -10°C50°C • Storage Temperature: -20°C60°C
Light Source	0 ~ 5000Lux (fluorescent light), 0 ~ 100,000Lux (natural light)
Resistance	1.5m drop to concrete surface
IP standard	IP 54

